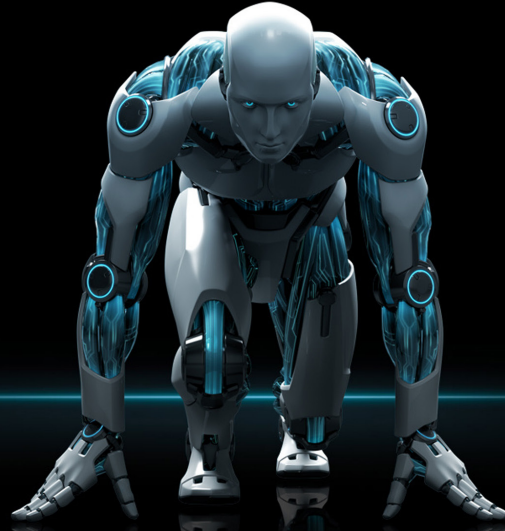


*YOUR DESIGNS*

**EDGE**  
T100



*OFF AND RUNNING...*

## IMPOSSIBLY SMALL WORKSTATION FOR CREATIVE PROFESSIONALS

Edge by NextComputing is a unique, high performance computer line for content creation, VR, and CAD developers.

Edge T100 creative workstation headlines the lineup, designed for demanding creative professional applications. Delivering maximum throughput performance by incorporating workstation-class components, Edge T100 accommodates high-end graphics cards, GPU processing, or PCI Express cards.

Featuring NextComputing's exclusive soft touch finish, Edge systems are designed for the most discriminating creative professionals, wrapped up in a sleek and impossibly small package so your creative tools stand out as much as your designs.

### THE CREATIVE EDGE

- Impossibly small footprint
- Sleek design with exclusive soft touch finish
- Portability for demos, travel and tradeshow

### HIGH PERFORMANCE

- Intel Xeon, Intel Core i7, or AMD Ryzen 7
- Up to 3 full size professional GPUs
- Range of internal storage options including PCI Express card based SSDs and SATA based SSDs for increased I/O performance

**EDGEWORKSTATIONS.COM**

<b>Available CPUs</b>	Single or dual Intel® Xeon, single Intel® Core™ i7, or single AMD Ryzen™ 7
<b>Memory</b>	Up to 512GB DDR4 RAM
<b>Motherboard</b>	ATX or CEB form factors. <i>Note:</i> 2.5" removable drives are only available with an ATX motherboard
<b>PCI Expansion</b>	Up to (7) full-length PCI Express 3.0 slots. Card lengths are subject to the following: <ul style="list-style-type: none"> <li>• With 600W PSU - Single-slot cards in PCI Express slot 1 (nearest the CPU) can be up to 12.83" in length (without removable drives. Configurations with removable drives up to 11"), all other cards can be up to 10.5" in length</li> <li>• With 800W PSU - Cards in PCI Express slots are limited to 9" in length</li> </ul>
<b>Storage</b>	Up to (3) fixed 3.5" SATA/SAS hard drives, up to 10TB each <b>-and-</b> up to (4) no-tools-removable 2.5" SATA or SATA SSD hard drives (up to 2TB each) and up to (2) additional fixed 2.5" SATA/SAS/SATA SSD hard drives (up to 2TB each) <b>-or-</b> up to (6) additional fixed 2.5" SATA/SAS/SATA SSD drives (up to 2TB each)
<b>RAID</b>	Onboard SATA RAID 0/1/5/10, or via add-on PCIe RAID controller
<b>Operating Systems</b>	<ul style="list-style-type: none"> <li>• Windows 10, Windows 8.1 Pro/Ultimate, Windows 7 Pro/Ultimate, and Windows 2012 and 2016 server</li> <li>• CentOS, Red Hat and other Linux distributions</li> <li>• VMware vSphere Hypervisor (ESXi) and other virtualization environments</li> </ul>
<b>Power</b>	600W or 800W 110/220V, 50/60Hz auto-switching 80 PLUS rated power supply <i>Note:</i> See "PCI Expansion" above for limits to PCI card length based on chosen power supply.
<b>Physical</b>	6.67" (169.41mm) D x 16.75" (425.45mm) W x 13.69" (347.73mm) H
<b>Carrying Cases</b>	<ul style="list-style-type: none"> <li>• Optional soft carrying case</li> <li>• Optional hardened cases and rolling transit cases available</li> </ul>
<b>Warranty</b>	3 years parts and labor

Edge T100 is built to offer the best performance for applications such as		
3ds Max	CATiA	NVIDIA Iray
Adobe Creative Cloud	CINEMA 4D	Octane Render
AMD ProRender	DaVinci Resolve	ReCap 360
ANSYS	Inventor	Revit
ArchiCAD	KeyShot	Solid Edge
Arnold	Maya	SOLIDWORKS
AutoCAD	Mental Ray	V-Ray
	Navisworks	Virtual Reality

